

L&L FABRICATION

VESSELS



"U" Stamp Coded Vessel
Fabrication and Welding



"R" Stamp Coded Vessel
Repairs and Alterations



Engineering & Design Services



Customized Hauling Services



Custom Fabrication and
Processing



CNC Plasma Cutting



Structural and Plate Steel
Inventory



Production Equipment Rebuilds
and Sales



Valve Rebuilds & Repair



Custom Gaskets



Sandblasting and Coating

info@LNLFAB.com

306 Hwy 59 | Douglas, WY 82633
418 N 9th Avenue | Greeley, CO 80631
307.358.5834 | www.lnlfab.com

L&L FABRICATION

WHAT MAKES US BETTER

L&L is a premier fabrication and oilfield service facility in the Rocky Mountain region. We pride ourselves in delivering customer specific solutions since 1994. Our goal is to deliver what you want, when you want it, safely and efficiently.

Let us help you build tomorrow.

EQUIPMENT AND CAPABILITIES

Facility Size and Capability

- 57,000+ Square Feet in Facilities
- 27+ Acres of Yard Space
- 2 10-ton Overhead Bridge Cranes

Plasma Table: Messer Metalmaster Evolution HyDefinition 5 axis CNC plasma table

- Cutting Area: Width 10'-0" x Length 20'-0" sheets/plates
- Min thickness: Gauge material Carbon Steel, Stainless and Aluminum
- Max thickness: Carbon Steel Plate 2", Stainless and Aluminum 1-1/2"
- Controller: Hypertherm XPR300 X-Definition Plasma System True Hole technology
- Beveling: +/- 52 degrees torch tilt and Bevel Angle Change on the Fly capabilities

Plate Roll: Davi Plate Roll Model CO3750

- Rolling Capacity:
- Carbon Steel Max 1-1/4" thick x 144" wide
- Stainless 3/4" thick x 144" wide
- *Heavier plate can be rolled in narrower sections

Structural Roll: RMT A-FAB 393

- Flats Hard Way - up to 3/4" x 4" | Easy Way - up to 1-1/4" x 8"
- Rounds - up to 3" dia
- Squares - 5/8" to 2-3/8"
- Tees - Leg Down or Out - up to 4" x 4" x 7/16" | Leg In - up to 3-1/2" x 3-1/2" x 3/8"
- Angles - Leg In - up to 4 x 4 x 1/2" | Leg Out - up to 4" x 4" x 3/8"
- Channels - Leg In or Out - up to C7 x 9.8#
- I-Beam - Easy Way - up to S6 x 12.5#
- Wide Flange Beam - Easy Way - up to W4 x 13#
- Round Tube - 5/8"od x .040w up to 5"od x .100w
- Square HSS Tube - up to 3"sq x .200w
- Rectangle HSS Tube - up to 1-1/2" x 4" x .160w
- Pipe (sch 40) - 1/2"sch 40 up to 4"sch 40

Saw: S-FAB CDM 21-32 Miter Saw

- Up to 60° miter capability
- Max Capacity at 0° Round 22.0" Dia | Flat 21.3"H x 32.3"W | Square 21.3" Dia
- Max Capacity at 30° Round 22.0" Dia | Flat 21.3"H x 27.8"W | Square 21.3" Dia
- Max Capacity at 45° Round 21.7" Dia | Flat 21.3"H x 21.7"W | Square 21.3" Dia

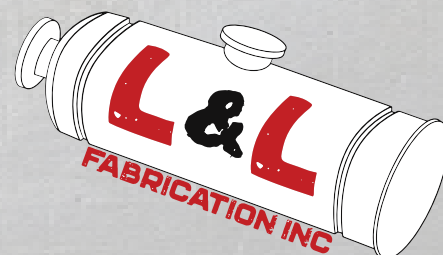
Iron Worker: Scotchman 5014-ET

- Rated on: 65,000 PSI Tensile A36 Mild Steel
- Punching Capacity 50 ton: 1-1/4" in 1/2" | 13/16" in 3/4" | Throat Depth: 4"
- Angle Shear: 90° 4" x 4" x 3/8" | 45° 2" x 2" x 3/8"
- Pipe Notcher Sch 40: 3/4" | 1" | 1-1/4" | 1-1/2" | 2"
- Rectangle Notcher: 2-1/2" x 3" x 5/16" | 2-1/2" x 2-3/4" x 3/8"
- 90° V. Notcher: 6" x 6" x 1/8" | 3" x 3" x 1/4"

Sub-Arc Welder: ESAB

3 Press Brakes

- Various Sizes

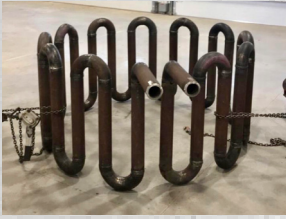
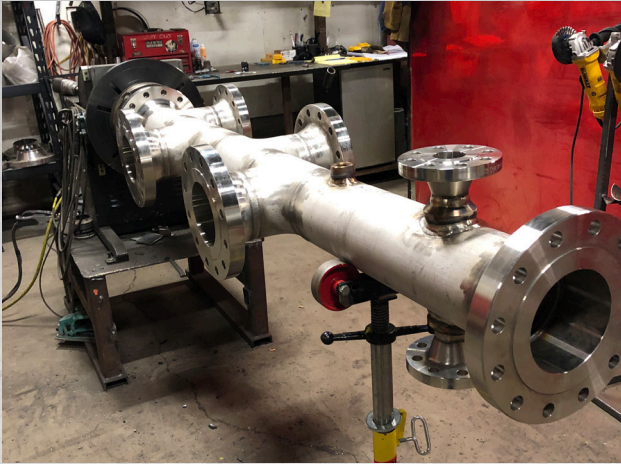


307.358.5834 | www.lnlfab.com



L&L FABRICATION

CUSTOM FABRICATION & METAL FORMING



General & Structural Steel Fabrication



Engineering & Design Services



Customized Hauling Services



CNC Plasma Cutting



Metal Forming



Structural and Plate Steel Inventory



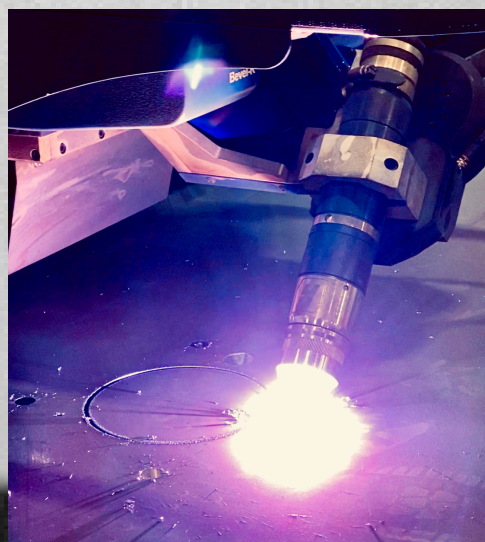
Sandblasting and Coating

info@LNLFAB.com

306 Hwy 59 | Douglas, WY 82633

418 N 9th Avenue | Greeley, CO 80631

307.358.5834 | www.lnlfab.com



L&L FABRICATION

WHAT MAKES US BETTER

L&L is a premier fabrication and oilfield service facility in the Rocky Mountain region. We pride ourselves in delivering customer specific solutions since 1994. Our goal is to deliver what you want, when you want it, safely and efficiently.

Let us help you build tomorrow.

EQUIPMENT AND CAPABILITIES

Facility Size and Capability

- 57,000+ Square Feet in Facilities
- 27+ Acres of Yard Space
- 2 10-ton Overhead Bridge Cranes

Plasma Table: Messer Metalmaster Evolution HyDefinition 5 axis CNC plasma table

- Cutting Area: Width 10'-0" x Length 20'-0" sheets/plates
- Min thickness: Gauge material Carbon Steel, Stainless and Aluminum
- Max thickness: Carbon Steel Plate 2", Stainless and Aluminum 1-1/2"
- Controller: Hypertherm XPR300 X-Definition Plasma System True Hole technology
- Beveling: +/- 52 degrees torch tilt and Bevel Angle Change on the Fly capabilities

Plate Roll: Davi Plate Roll Model CO3750

- Rolling Capacity:
- Carbon Steel Max 1-1/4" thick x 144" wide
- Stainless 3/4" thick x 144" wide
- *Heavier plate can be rolled in narrower sections

Structural Roll: RMT A-FAB 393

- Flats Hard Way - up to 3/4" x 4" | Easy Way - up to 1-1/4" x 8"
- Rounds - up to 3" dia
- Squares - 5/8" to 2-3/8"
- Tees - Leg Down or Out - up to 4" x 4" x 7/16" | Leg In - up to 3-1/2" x 3-1/2" x 3/8"
- Angles - Leg In - up to 4 x 4 x 1/2" | Leg Out - up to 4" x 4" x 3/8"
- Channels - Leg In or Out - up to C7 x 9.8#
- I-Beam - Easy Way - up to S6 x 12.5#
- Wide Flange Beam - Easy Way - up to W4 x 13#
- Round Tube - 5/8"od x .040w up to 5"od x .100w
- Square HSS Tube - up to 3"sq x .200w
- Rectangle HSS Tube - up to 1-1/2" x 4" x .160w
- Pipe (sch 40) - 1/2"sch 40 up to 4"sch 40

Saw: S-FAB CDM 21-32 Miter Saw

- Up to 60° miter capability
- Max Capacity at 0° Round 22.0" Dia | Flat 21.3"H x 32.3"W | Square 21.3" Dia
- Max Capacity at 30° Round 22.0" Dia | Flat 21.3"H x 27.8"W | Square 21.3" Dia
- Max Capacity at 45° Round 21.7" Dia | Flat 21.3"H x 21.7"W | Square 21.3" Dia

Iron Worker: Scotchman 5014-ET

- Rated on: 65,000 PSI Tensile A36 Mild Steel
- Punching Capacity 50 ton: 1-1/4" in 1/2" | 13/16" in 3/4" | Throat Depth: 4"
- Angle Shear: 90° 4" x 4" x 3/8" | 45° 2" x 2" x 3/8"
- Pipe Notcher Sch 40: 3/4" | 1" | 1-1/4" | 1-1/2" | 2"
- Rectangle Notcher: 2-1/2" x 3" x 5/16" | 2-1/2" x 2-3/4" x 3/8"
- 90° V. Notcher: 6" x 6" x 1/8" | 3" x 3" x 1/4"

Sub-Arc Welder: ESAB

3 Press Brakes

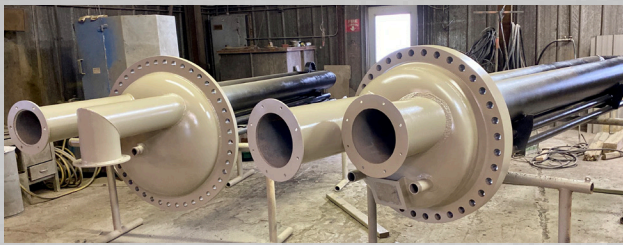
- Various Sizes



307.358.5834 | www.lnlfab.com



L&L FABRICATION



FIELD TECH SERVICES



Engineering & Design Services



Field Service Crews
BMS Installation
& Maintenance



Pipeline Repair and
Maintenance Crews



Combustion Maintenance



Valve Repair & Maintenance



Equipment Cleaning



Hydrovac Services



Structural and Plate Steel
Inventory



Emergency Services



Sandblasting and Coating



Large Variety of Parts and
Service Equipment Available

info@LNLFAB.com

306 Hwy 59 | Douglas, WY 82633
418 N 9th Avenue | Greeley, CO 80631
307.358.5834 | www.lnlfab.com